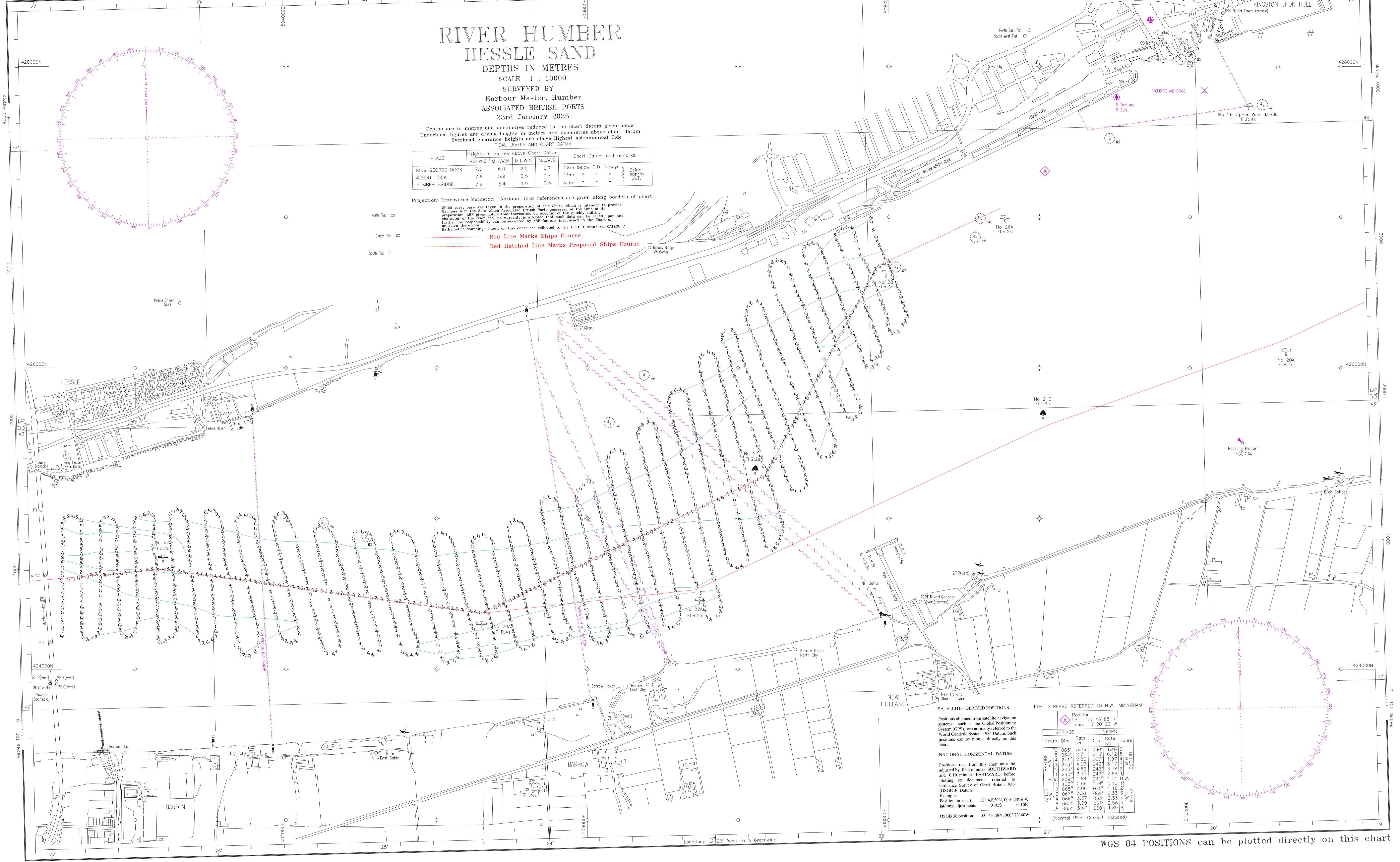


WGS 84 POSITIONS can be plotted directly on this chart



RIVER HUMBER HESSLE SAND

DEPTHS IN METRES
SCALE 1 : 10000

SURVEYED BY
Harbour Master, Humber
ASSOCIATED BRITISH PORTS
23rd January 2025

Depths are in metres and decimetres reduced to the chart datum given below
Underlined figures are drying heights in metres and decimetres above chart datum
Overhead clearance heights are above Highest Astronomical Tide
TIDAL LEVELS AND CHART DATUM

PLACE	Heights in metres above Chart Datum				Chart Datum and remarks
	M.H.W.S.	M.H.W.N.	M.L.W.N.	M.L.W.S.	
KING GEORGE DOCK	7.6	6.0	2.5	0.7	3.9m below O.D. Newlyn
ALBERT DOCK	7.6	5.9	2.5	0.7	3.9m " " " " " "
HUMBER BRIDGE	7.2	5.4	1.9	0.3	3.3m " " " " " "

Projection: Transverse Mercator. National Grid references are given along borders of chart

Whilst every care was taken in the preparation of this Chart, which is intended to provide Mariners with the data which Associated British Ports possessed at the time of the preparation, ABP gives notice that thereafter, on account of the quickly shifting character of the river bed, no warranty is afforded that such data can be relied upon and further, no responsibility can be accepted by ABP for any inaccuracy in the Chart or omission therefrom.

Barometric soundings shown on this chart are collected to the U.K.H.O. standard: CATZOC C

- North Flat
- Centre Flat
- South Flat

Red Line Marks Ships Course
Red Hatched Line Marks Proposed Ships Course

Other symbols: Railway Bridge, NW Corner, NH Outfall, etc.

SATELLITE - DERIVED POSITIONS

Positions obtained from satellite navigation systems, such as the Global Positioning System (GPS), are normally referred to the World Geodetic System 1984 Datum. Such positions can be plotted directly on this chart.

NATIONAL HORIZONTAL DATUM

Positions read from this chart must be adjusted by 0.02 minutes SOUTHWARD and 0.10 minutes EASTWARD before plotting on documents referred to Ordnance Survey of Great Britain 1936 (OSGB 36 Datum).

Example:
Position on chart 53° 43' 50N, 000° 23' 50W
lat/long adjustments 0.02S 0.10E
OSGB 36 position 53° 43' 48N, 000° 23' 40W

TIDAL STREAMS REFERRED TO H.W. IMMINGHAM

BEFORE	SPRINGS		NEAPS		AFTER
	Hours	Rate Kn	Rate Kn	Hours	
0645	2.71	3.26	0.60	1.48	06
0715	2.80	2.71	2.43	0.12	07
0800	4.87	2.43	2.43	3.17	08
0845	4.52	2.43	2.43	3.78	09
0930	3.71	2.43	2.43	2.68	10
1015	1.84	2.43	1.51	1.11	11
1100	0.69	2.34	0.10	0.10	12
1145	3.06	0.70	1.16	1.12	13
1230	3.31	0.62	2.33	3.33	14
1315	3.37	0.63	2.33	3.33	15
1400	3.09	0.61	2.56	1.89	16
1445	3.47	0.60	1.89	0.10	17

(Normal River Current Included)